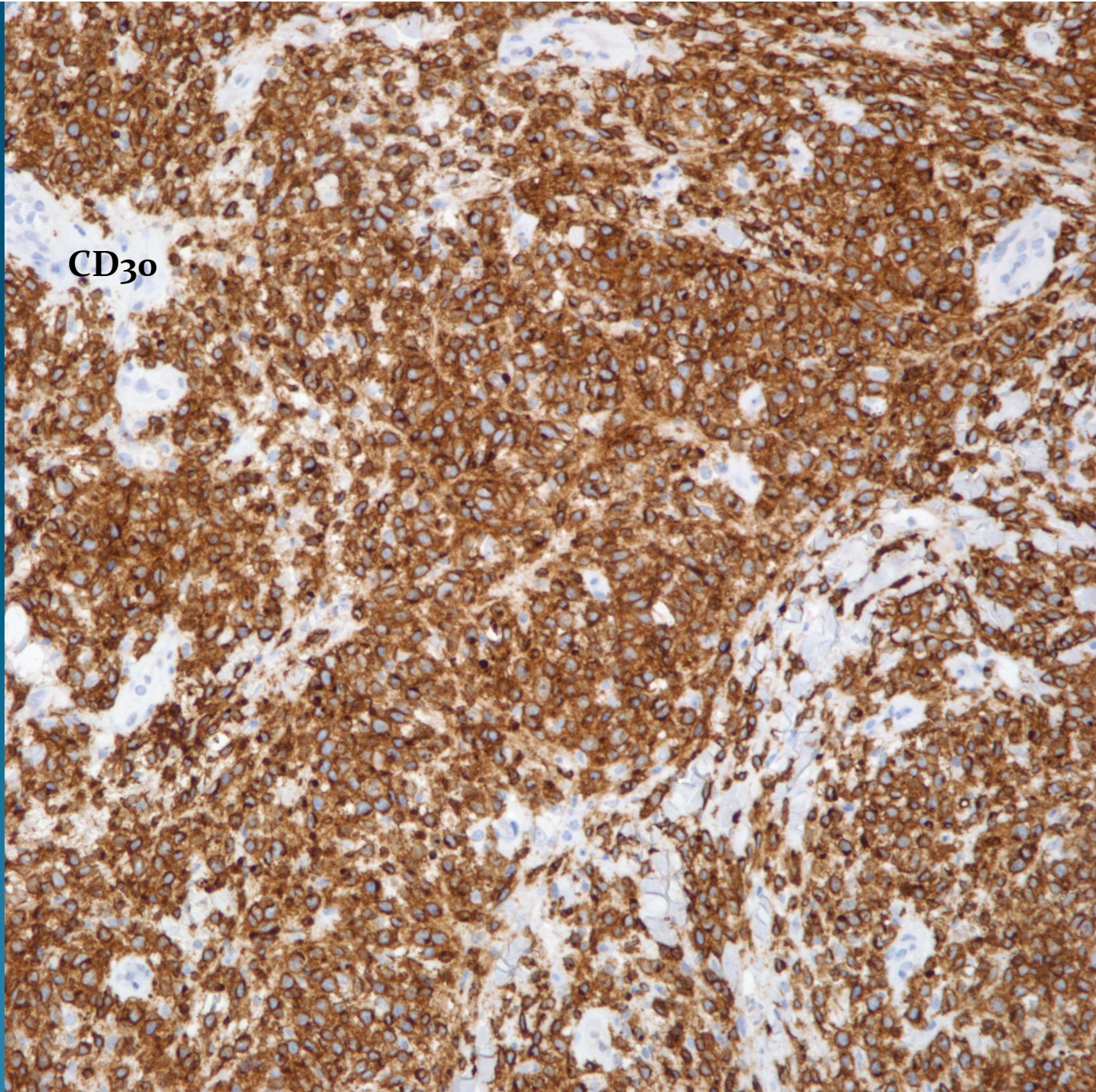


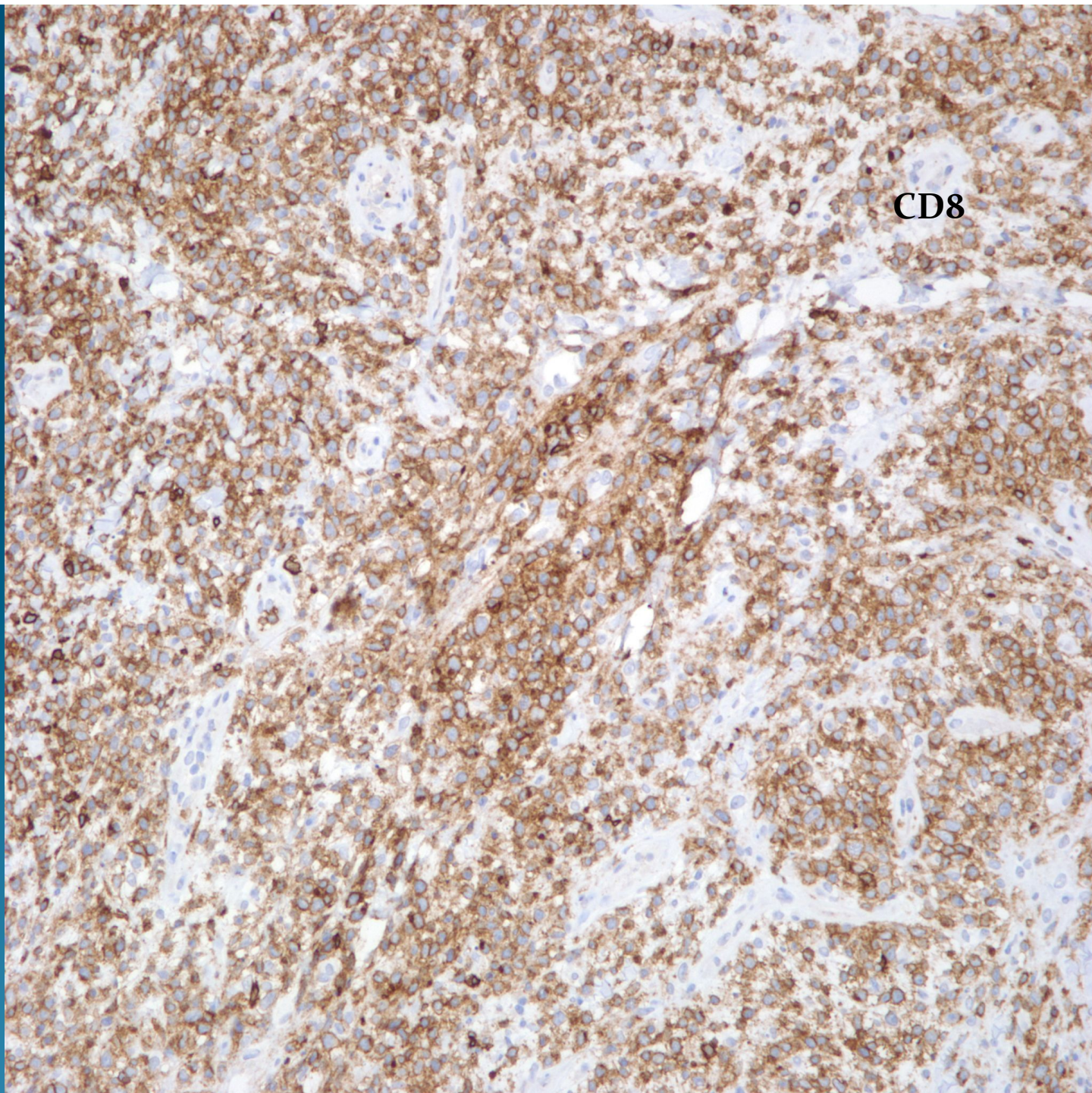


CD30





**CD8**



# Anaplastic Large Cell Lymphoma (CD30, Ki-1 Lymphoma)

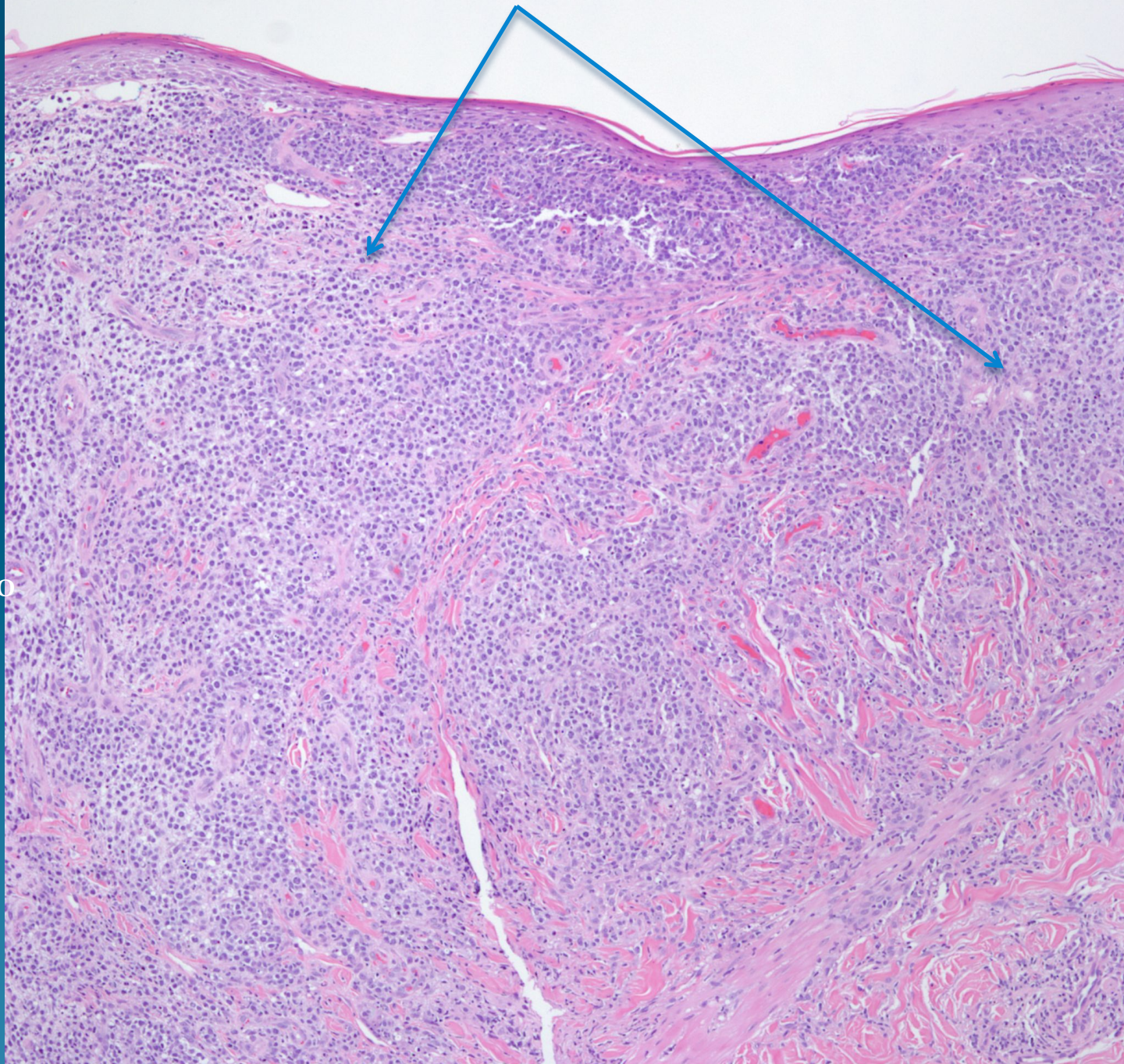


# Notes

- While this anaplastic lymphoma displays a classic histopathology and strong CD30 immunophenotype, it is unusual for the very strong expression of CD8
- CD8+ anaplastic large cell lymphomas are a rare variant with a mixed course. Some cases have an indolent behavior while others are associated with multiple recurrences and relapses with eventual dissemination.
- This current case presented as a solitary nodule limited to the skin



Diffuse infiltrate of pleomorphic large lymphoid cells



Confirm  
With CD30  
immuno-  
stains